



TAILORED  
IMAGE



NEW FOR YOU

BROOK  
TAVERNER

SINCE 1912

ALL IN STOCK AUTUMN 2024



# BROOK TAVERNER

SINCE 1912

## BESPOKE LOOKS, FROM STOCK

More and more businesses are embracing creativity when it comes to designing uniforms, moving beyond the traditional and opting for unique, personalised looks that make a statement.

By mixing and matching colours, textures, styles and fabrics, companies are using uniforms as a powerful extension of their brand identity, infusing their clothing with individuality and purpose.

Each new piece from Brook Taverner has been carefully chosen to provide a platform for teams to express themselves.

Whether styling our brand-new Rapport Collection with other tailoring ranges, layering some premium merino knitwear for a touch of texture and class, or opting for grandad collar shirts for a more classic feel – teams can create uniforms that are as unique as the wearers, whatever their style.

Our significant investment in stock gives your customers the freedom to create, and you the confidence to deliver.

We're extremely proud of everything that's new, and we hope you love them all as much as we do.

<a href="#">RAPPORT COLLECTION – IN STOCK NOW</a>	<a href="#">4 - 15</a>
<a href="#">PREMIUM KNITWEAR / MERINO BLEND – IN STOCK NOW</a>	<a href="#">16 - 21</a>
<a href="#">PERFORMANCE KNITWEAR / COTTON BLEND – IN STOCK NOW</a>	<a href="#">22 - 31</a>
<a href="#">JERSEY STRETCH COLLECTION / TROUSERS – IN STOCK FROM OCTOBER</a>	<a href="#">32 - 37</a>
<a href="#">TUNIC – IN STOCK FROM OCTOBER</a>	<a href="#">38 - 39</a>
<a href="#">STRETCH COTTON BLEND / GRANDAD COLLAR STYLES – IN STOCK FROM OCTOBER</a>	<a href="#">40 - 45</a>
<a href="#">BUSINESS ESSENTIALS – IN STOCK NOW</a>	<a href="#">46 - 51</a>

BROOK  
TAVERNER

SINCE 1912

NEXUS

## RAPPORT COLLECTION

Reflecting the current corporate trends, this new collection boasts a refined garment selection available in brand new Sand and Denim colours that add a fresh dimension to our tailoring offering. Destined for customer-facing roles, the Rapport Collection perfectly upholds the elegance of high-end establishments.

### SPECIFICATIONS

COMPOSITION:	67% Polyester (Recycled), 28% Viscose, 5% LYCRA® Elastane
WEIGHT:	315glm / Midweight
STRETCH:	16% Bi-Stretch Fabric
DURABILITY:	Martindale Test >90,000 rubs
COLOURS:	A. Denim B. Sand
AFTERCARE:	Machine washable at 30°C



Contains  
67% recycled  
material



Bi-Stretch  
Fabric



28% Birla Spunshades™  
Viscose



[www.LYCRA.com](http://www.LYCRA.com)



STANDARD  
100



STeP

IN STOCK NOW

SHE WEARS  
**MARGOT JACKET**  
2390 A. Denim

**ELEANOR TROUSER**  
2392 A. Denim

HE WEARS  
**WILLIAM JACKET**  
5427 A. Denim

**OLIVER TROUSER**  
8025 A. Denim



**BEATRICE WAISTCOAT TAILORED FIT**

B. Sand

Tailored fit, 5 button front, lining back with adjuster, 2 narrow welt pockets.

Sizes:

- XS 4 - 6
- S 8 - 10
- M 12 - 14
- L 16 - 18
- XL 20 - 22
- XXL 24 - 26

Centre back length at size M = 51.5cm

Code & Colours:

2391 A, B

**ELEANOR TROUSER SLIM LEG**

B. Sand

Mid waist, slim leg, elastic waistband with hook & bar fastening, angled side pockets, 2 mock hip pockets.

Sizes:

- 6 - 26 waist in leg lengths
- S - 27", R - 29", L - 31", XL - 33" & 36" unfinished

Half hem width at size 12R = 17.5cm

Code & Colours:

2392 A, B



BI-STRETCH FABRIC



Contains  
67% recycled  
material

**BROOK  
TAVERNER**

SINCE 1912

IN STOCK NOW



**MARGOT JACKET TAILORED FIT**

B. Sand

Tailored fit, notch lapel, topstitch detailing, 2 slanted pockets, 1 jett pocket, buggy lined.

Sizes:

- 6 - 16 short
- 6 - 26 regular
- 8 - 18 long

Centre back length at size 12R = 60.5cm

Code & Colours:

2390 A, B



**HARRIET SKIRT STRAIGHT**

A. Denim

Straight skirt, centre vent, topstitch detailing, concealed back zip.

Sizes:

- 6 - 26 regular - 22"
- 8 - 18 long - 25"

Code & Colours:

2393 A, B

# BROOK TAVERNER

SINCE 1912

## WILLIAM JACKET TAILORED FIT B. Sand

Tailored fit, 2 button, peak lapel with side vents, 2 slanted flap pockets, 2 internal jett pockets, buggy lined.

### Sizes:

38" - 44" short  
34" - 56" regular  
38" - 46" long

Centre back length at size 40R = 76cm

Code & Colours:  
5427 A, B



## CONTINENTAL FLAIR

Each piece exudes elegant professionalism while embracing a touch of flair, perfect for customer-facing teams who seek to embody style and grace in the corporate world.



Contains  
67% recycled  
material



IN STOCK NOW



## GEORGE WAISTCOAT TAILORED FIT A. Denim

Tailored fit, 5 button front, lining back with adjuster, 2 narrow welt pockets.

### Sizes:

XS 34" - 36"  
S 38" - 40"  
M 42" - 44"  
L 46" - 48"  
XL 50" - 52"

Centre back length at size M = 63cm

Code & Colours:  
1914 A, B

## OLIVER TROUSER TAILORED FIT 8025 A. Denim

Tailored fit, flat front, hook bar and button fastening, slanted side pockets, hip jett button-through pocket.

### Sizes:

28" - 50" waist in leg lengths  
S - 29.5", R - 31.5, L - 33" & 36" unfinished  
Half hem width at size 34" = 20cm

Code & Colours:  
8025 A, B

BI-STRETCH FABRIC

# BROOK TAVERNER

SINCE 1912

## IT'S CALLED RAPPORT FOR A REASON

Mix both colours or pair with our other collections to create harmonious uniforms for any team.

IN STOCK NOW



**BEATRICE WAISTCOAT TAILORED FIT**  
2391 B. Sand

**ELEANOR TROUSER SLIM LEG**  
2392 A. Denim

**GEORGE WAISTCOAT TAILORED FIT**  
1914 B. Sand

**OLIVER TROUSER TAILORED FIT**  
8025 A. Denim



**MIX CONTRASTING COLOURS  
TO MAKE A BOLD STATEMENT**



**MARGOT JACKET TAILORED FIT**  
2390 A. Denim

**ELEANOR TROUSER SLIM LEG**  
2392 B. Sand



**WILLIAM JACKET TAILORED FIT**  
5427 A. Denim

**OLIVER TROUSER TAILORED FIT**  
8025 B. Sand

**BROOK  
TAVERNER**

SINCE 1912

**SHE  
WEARS...**

MARGOT JACKET / AMELIA SHIRT / AUSTIN SKIRT

IN STOCK NOW



ANDRIA BLOUSE / ELEANOR TROUSER



KANSAS SHIRT / HARRIET SKIRT

MARGOT JACKET / ATHENS ROLLNECK /  
ELEANOR TROUSER



Contains  
67% recycled  
material

BI-STRETCH  
FABRIC

WILLIAM JACKET / FREDERICK POLO /  
DENVER CHINO



**CORPORATE EVENTS  
ENTERTAINMENT  
MANAGEMENT  
STYLE**



Contains  
67% recycled  
material

**BI-STRETCH  
FABRIC**

**BROOK  
TAVERNER**

SINCE 1912

# HE WEARS...

WILLIAM JACKET / VOLTERRA SHIRT / PEGASUS TROUSER

IN STOCK NOW



MEMPHIS WAISTCOAT / RENO SHIRT / OLIVER TROUSER



WILLIAM JACKET / OSLO ROLLNECK / OLIVER TROUSER



BROOK  
TAVERNER

SINCE 1912

## PREMIUM KNITWEAR MERINO BLEND

### SPECIFICATIONS

COMPOSITION: 50% Merino Wool, 50% Cotton  
GAUGE: 12 gauge knit  
COLOURS: A. Navy B. Oatmeal C. Charcoal D. Black E. Taupe F. Moss G. Cream  
AFTERCARE: Machine washable at 30°C

3 MEN'S STYLES

3 WOMEN'S STYLES

AVAILABLE IN UP TO 7 COLOURS

Let the knitwear do the talking. Whether merino styles are worn alone or as textured layers, these stunning pieces give close-knit teams the flexibility to choose combinations that work for them.



IN STOCK NOW

HE WEARS  
OSLO ROLLNECK  
4568 G. Cream

SHE WEARS  
ATHENS ROLLNECK  
2398 G. Cream

**BERLIN V-NECK**

F. Moss

V-neck jumper, ribbed neck, cuff and hem, double contrast inner neck design detail.

Sizes:

- XS 34"/36"
- S 38"
- M 40"/42"
- L 44"
- XL 46"/48"
- 2XL 50"
- 3XL 52"/54"

Code & Colours:

4566 A, B, C, D, E, F

**SOFT WEAR  
UPGRADE**



G. Cream (Oslo & Athens only)

E. Taupe

B. Oatmeal

F. Moss

C. Charcoal

A. Navy

D. Black



**COPENHAGEN 1/4 ZIP**

D. Black

1/4 zip jumper (YKK), ribbed neck, cuff and hem, double contrast inner neck design detail.

Sizes:

- XS 34"/36"
- S 38"
- M 40"/42"
- L 44"
- XL 46"/48"
- 2XL 50"
- 3XL 52"/54"

Code & Colours:

4567 A, B, C, D, E, F



3 MEN'S STYLES IN UP TO 7 COLOURS

**BROOK  
TAVERNER**

SINCE 1912

**OSLO ROLLNECK**

E. Taupe

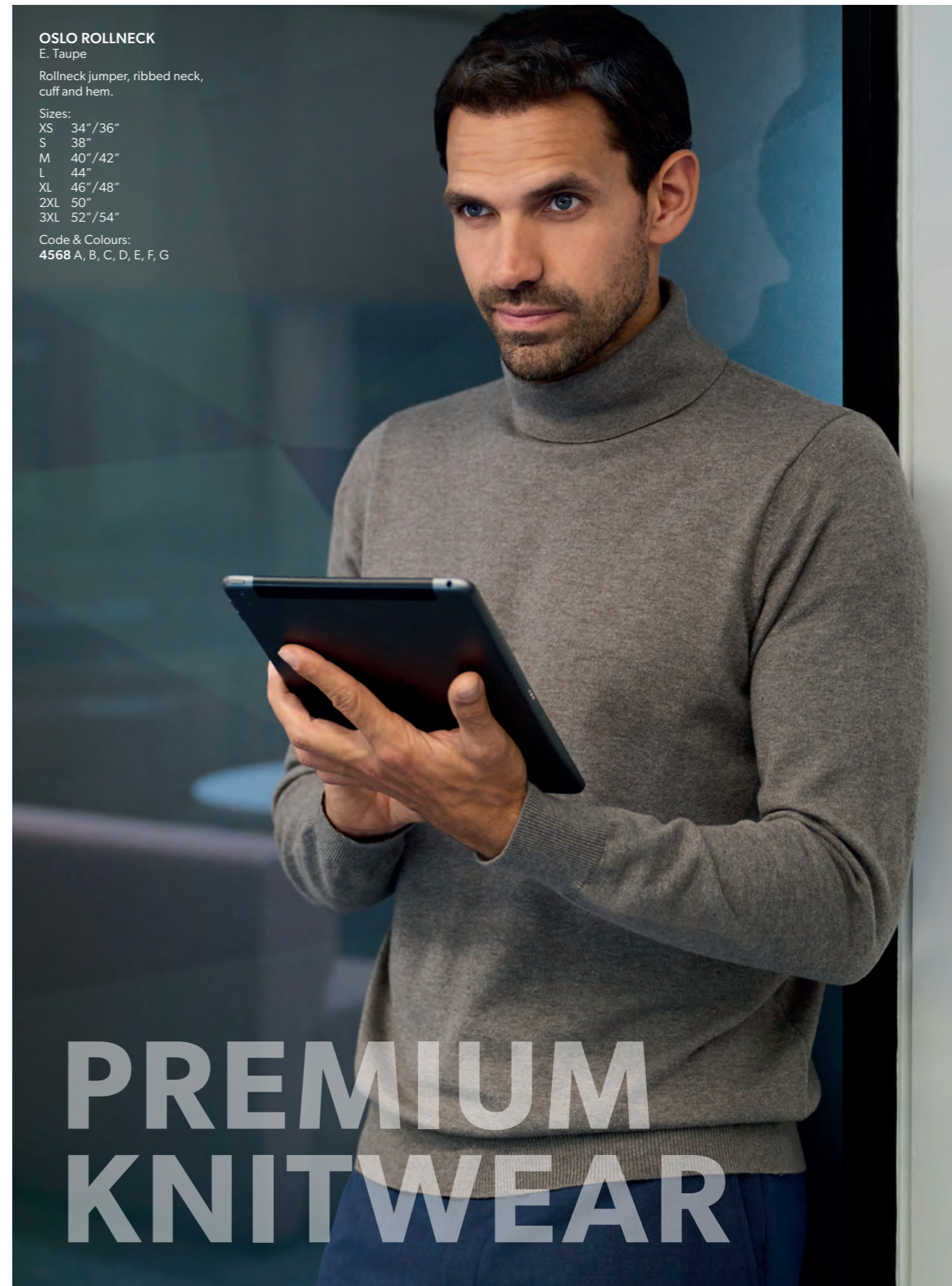
Rollneck jumper, ribbed neck, cuff and hem.

Sizes:

- XS 34"/36"
- S 38"
- M 40"/42"
- L 44"
- XL 46"/48"
- 2XL 50"
- 3XL 52"/54"

Code & Colours:

4568 A, B, C, D, E, F, G



**PREMIUM  
KNITWEAR**

**ATHENS ROLLNECK**  
B. Oatmeal

Rollneck jumper,  
ribbed neck,  
cuff and hem.

Sizes:  
XS 4/6  
S 8  
M 10/12  
L 14  
XL 16/18  
2XL 20  
3XL 22/24

Code & Colours:  
2398 A, B, C, D, G

**ADD A LAYER  
OF CLASS**



**NEW & LUXURIOUS**

**MERINO  
BLEND**

G. Cream (Oslo & Athens only)

B. Oatmeal

C. Charcoal

A. Navy

D. Black

**SOFIA V-NECK CARDIGAN**  
A. Navy

V-neck cardigan, ribbed placket,  
cuff and hem, double contrast  
inner neck design detail.

Sizes:  
XS 4/6  
S 8  
M 10/12  
L 14  
XL 16/18  
2XL 20  
3XL 22/24

Code & Colours:  
2397 A, B, C, D

Paired with Men's  
Copenhagen 1/4 Zip

**BROOK  
TAVERNER**

SINCE 1912

**RIGA V-NECK**  
C. Charcoal

V-neck jumper, ribbed neck,  
cuff and hem, double contrast  
inner neck design detail.

Sizes:  
XS 4/6  
S 8  
M 10/12  
L 14  
XL 16/18  
2XL 20  
3XL 22/24

Code & Colours:  
2396 A, B, C, D



3 WOMEN'S STYLES IN UP TO 5 COLOURS

**BROOK  
TAVERNER**

SINCE 1912

## PERFORMANCE KNITWEAR COTTON BLEND

### SPECIFICATIONS

**COMPOSITION:** 60% Cotton, 40% Acrylic  
**GAUGE:** 12 gauge knit  
**COLOURS:** A. Navy C. Charcoal D. Black G. Silver  
**AFTERCARE:** Machine washable at 30°C

**NEW TURTLENECKS  
NEW WOMEN'S 1/4 ZIP  
NEW SILVER COLOURWAY  
IN TRIED & TESTED FABRIC**

**IN STOCK NOW**

HE WEARS  
**FRANKLIN TURTLENECK**  
4561 A. Navy

SHE WEARS  
**GOLDEN TURTLENECK**  
2389 A. Navy

BROOK  
TAVERNER

SINCE 1912

## NEW TURTLENECKS

Our cotton blend knitwear continues to go from strength to strength; performing well, looking good and standing the test of time. It was a no-brainer to invest in this collection further and launch brand new turtlenecks!

### GOLDEN TURTLENECK

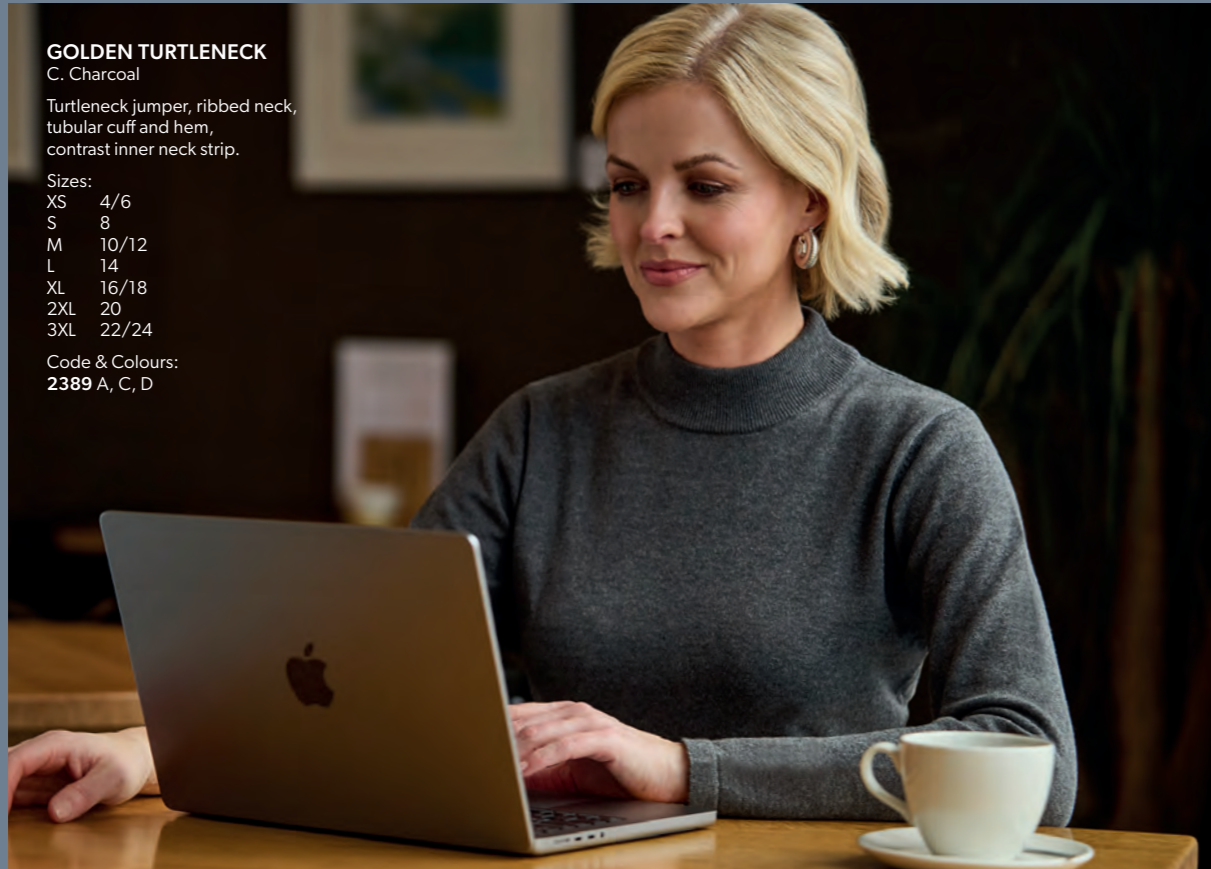
C. Charcoal

Turtleneck jumper, ribbed neck, tubular cuff and hem, contrast inner neck strip.

Sizes:

XS 4/6  
S 8  
M 10/12  
L 14  
XL 16/18  
2XL 20  
3XL 22/24

Code & Colours:  
2389 A, C, D



IN STOCK NOW

GOLDEN TURTLENECK  
2389 A. Navy

TURTLENECKS,  
AT HOME  
ANYWHERE

GOLDEN  
TURTLENECK  
2389 D. Black

PERFORMANCE  
KNITWEAR



**FRANKLIN  
TURTLENECK**

D. Black

Turtleneck jumper,  
ribbed neck,  
ribbed cuff and hem,  
contrast inner neck strip.

Sizes:

XS	34"/36"
S	38"
M	40"/42"
L	44"
XL	46"/48"
2XL	50"
3XL	52"/54"

Code & Colours:  
4561 A, C, D

TRIED & TESTED

**COTTON  
BLEND**

IN STOCK NOW

**BROOK  
TAVERNER**

SINCE 1912



FRANKLIN TURTLENECK  
4561 C. Charcoal



FRANKLIN TURTLENECK  
4561 A. Navy



FRANKLIN TURTLENECK  
4561 C. Charcoal

BROOK  
TAVERNER

SINCE 1912

IN STOCK NOW

## NEW WOMEN'S 1/4 ZIP NEW SILVER COLOURWAY

Following the resounding success of our Men's 1/4 Zip Jumper, Dallas, we were inspired to produce a matching women's style, Taylor. These styles, along with our other 3 best-selling Performance Knitwear pieces, are now available in a new stunning Silver colourway alongside our existing 3 core colourways.

# SILVER

# BROOK TAVERNER

SINCE 1912

IN STOCK NOW



**TAYLOR 1/4 ZIP**  
G. Silver

1/4 zip jumper, faux leather zip pull, ribbed neck, cuff and hem, contrast inner neck design detail.

Sizes:  
XS 4/6  
S 8  
M 10/12  
L 14  
XL 16/18  
2XL 20  
3XL 22/24

Code & Colours:  
2388 A, C, D, G

**DALLAS 1/4 ZIP**  
G. Silver

1/4 zip jumper, faux leather zip pull, ribbed neck, cuff and hem, contrast inner neck design detail.

Sizes:  
XS 34"/36"  
S 38"  
M 40"/42"  
L 44"  
XL 46"/48"  
2XL 50"  
3XL 52"/54"

Code & Colours:  
7898 A, C, D, G



**BOSTON V-NECK**  
G. Silver

V-neck, long sleeve, ribbed neck, cuff and hem, contrast inner neck design detail.

Sizes:  
XS 34"/36"  
S 38"  
M 40"/42"  
L 44"  
XL 46"/48"  
2XL 50"  
3XL 52"/54"

Code & Colours:  
7818 A, C, D, G



**ATLANTA V-NECK**  
G. Silver

V-neck, ribbed neck, tubular cuff and hem, contrast inner neck design detail.

Sizes:  
XS 4/6  
S 8  
M 10/12  
L 14  
XL 16/18  
2XL 20  
3XL 22/24

Code & Colours:  
2307 A, C, D, G



**AUGUSTA V-NECK CARDIGAN**  
G. Silver

V-neck, ribbed placket, hem and cuff, contrast inner neck design detail.

Sizes:  
XS 4/6  
S 8  
M 10/12  
L 14  
XL 16/18  
2XL 20  
3XL 22/24

Code & Colours:  
2309 A, C, D, G



**BROOK  
TAVERNER**

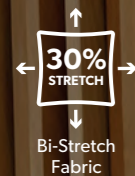
SINCE 1912

## JERSEY STRETCH COLLECTION

It's now a complete Collection! Introducing trousers into this range means teams can now feel the comfort of Jersey Stretch from head to toe. Finding a uniform that moves freely and adapts effortlessly to the wearer has never been easier.

### SPECIFICATIONS

**COMPOSITION:** 67% Viscose, 29% Nylon, 4% Elastane  
**WEIGHT:** 360g/m / Midweight  
**STRETCH:** 30% Bi-Stretch Fabric  
**COLOURS:** A. Navy D. Black  
**AFTERCARE:** Machine washable at 30°C



## NEW MEN'S & WOMEN'S TROUSERS



IN STOCK FROM OCTOBER

HE WEARS  
**TAURUS TROUSER**  
8026 A. Navy

SHE WEARS  
**CERES TROUSER**  
2400 A. Navy

# JERSEY STRETCH TROUSERS



AVAILABLE IN 2 COLOURS



## DESIGNED TO MOVE WITH YOU

BROOK TAVERNER

SINCE 1912



**TAURUS TROUSER TAILORED FIT**

A. Navy

Stretch waistband, flat front, 2 side pockets, 2 hip pockets, belt loops.

Sizes:

28" - 42" waist in leg lengths

S - 29.5", R - 31.5", L - 33" & 36" unfinished

Half hem width at size 34" = 18cm

Code & Colours:

8026 A, D

BI-STRETCH FABRIC



BI-STRETCH FABRIC

## BROOK TAVERNER

SINCE 1912

### CERES TROUSER SLIM LEG

A. Navy

Stretch waistband, full length sewn in front crease, mock fly, 2 side pockets.

Sizes:

6 - 24 waist in leg lengths

S - 27", R - 29", L - 31", XL - 33" & 36" unfinished

Half hem width at size 12R = 18cm

Code & Colours:

2400 A, D



MATCHES  
LIBRA  
JACKET

AVAILABLE IN 2 COLOURS



## COMFORTABLE IN YOUR ROLE

BROOK  
TAVERNER

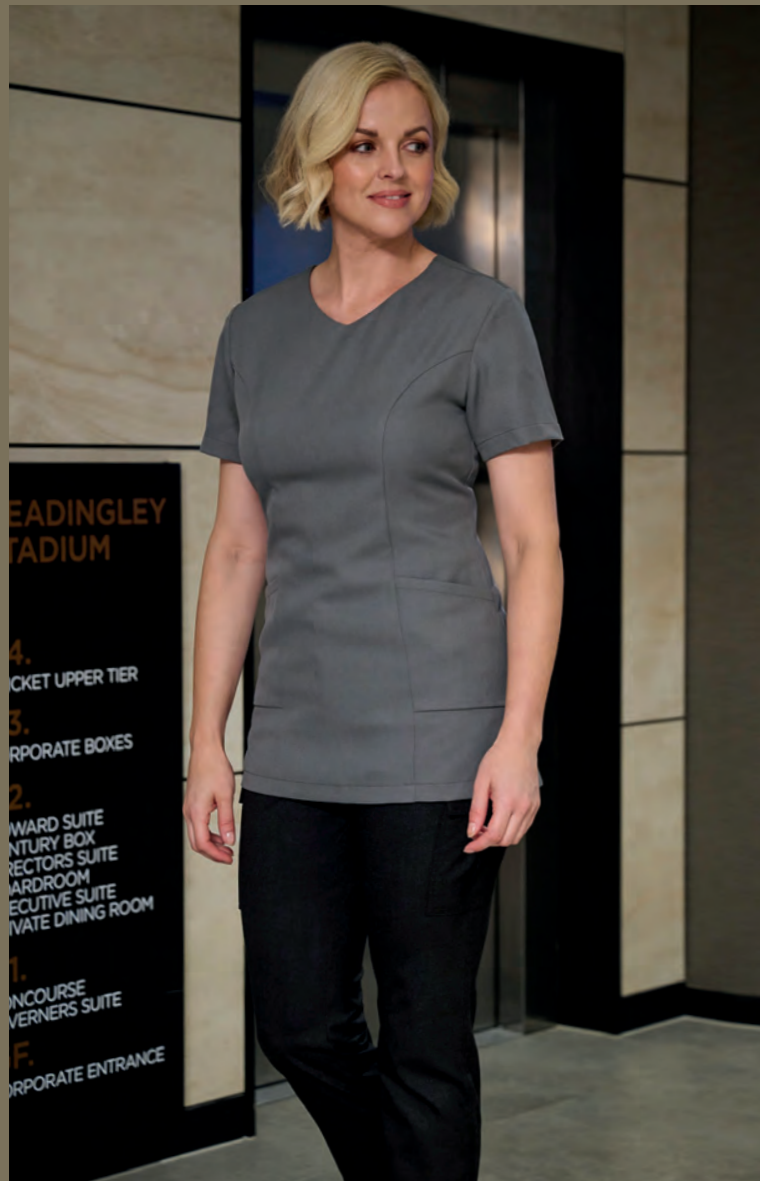
SINCE 1912

# LOCKHART TUNIC

Designed for those who take pride in their work. Crafted from recycled polyester into a bi-stretch fabric, our high-performance tunic delivers unmatched comfort and flexibility, simultaneously withstanding the demands of busy days and providing a fresh, professional uniform.

## SPECIFICATIONS

**COMPOSITION:** 100% Polyester (Recycled)  
**WEIGHT:** 175gsm / Lightweight  
**STRETCH:** 10% Bi-Stretch Fabric  
**COLOUR:** A. Navy C. Grey D. Black  
**AFTERCARE:** Machine washable at 30°C



AVAILABLE IN 3 COLOURS

LOCKHART TUNIC  
2402 A. Navy

## SERVICE-READY

LOCKHART TUNIC  
D. Black

V-neck, princess seams,  
2 external pockets, 1 with pen holder,  
centre back concealed zip.

Sizes:  
6 - 26 regular

Code & Colours:  
2402 A, C, D

IN STOCK FROM OCTOBER

**BROOK  
TAVERNER**

SINCE 1912

## STRETCH COTTON BLEND

Given the feedback from our customers, it feels especially exciting to launch grandad collar shirts in our existing high-stretch, cotton-blend fabric. These modern shirts guarantee a polished, clean look throughout the day so teams can focus on what matters - delivering an outstanding customer experience.

### SPECIFICATIONS

**COMPOSITION:** 57% Polyester, 39% Cotton, 4% Elastane  
**WEIGHT:** 120gsm / Lightweight  
**STRETCH:** 21% High Level of Stretch  
**COLOUR:** A. White B. Sky Blue D. Black  
**AFTERCARE:** Machine washable at 30°C



High Level  
of Stretch



Easy  
Iron



STANDARD  
100



STeP

## NEW MEN'S & WOMEN'S GRANDAD COLLAR SHIRTS

IN STOCK FROM OCTOBER

SHE WEARS  
**AMELIA SHIRT**  
2403 A. White

HE WEARS  
**VOLTERRA SHIRT**  
4571 A. White



**VOLTERRA SHIRT**  
SLIM FIT  
D. Black  
Grandad collar, slim fit,  
long sleeve, single cuff.  
Sizes:  
14" - 22"  
Code & Colours:  
4571 A, B, D

**BROOK  
TAVERNER**

SINCE 1912

# GRANDAD COLLAR SHIRTS



AVAILABLE IN 3 COLOURS

Colours:  
A. White  
B. Sky Blue  
D. Black



**BROOK  
TAVERNER**

SINCE 1912

# STAND OUT SUBTLY

Blend classic elegance with modern sophistication.



AVAILABLE IN 3 COLOURS



Colours:  
A. White  
B. Sky Blue  
D. Black



**AMELIA SHIRT**  
SEMI-FITTED  
A. White

Grandad collar, semi-fitted, long sleeve,  
single cuff, princess seams.

Sizes:  
6 - 24 regular

Code & Colour:  
2403 A, B, D

**BROOK  
TAVERNER**

SINCE 1912

## **BUSINESS ESSENTIALS**

Our Business Essentials continues to go from strength to strength. We are proud to extend this range to include 2 new women's pilot shirts and a men's classic fit poplin shirt. As part of our commitment to improve our environmental performance, all our Business Essential shirts are now transitioning to recycled polyester.

### **SPECIFICATIONS**

**COMPOSITION:** 65% Polyester (Recycled), 35% Cotton  
**WEIGHT:** 115gsm / Lightweight  
**COLOUR:** A. White  
**AFTERCARE:** Machine washable at 30°C



Contains  
65% recycled  
material



Easy  
Iron



STANDARD  
100



STeP

**NEW WOMEN'S PILOT SHIRTS**  
**NEW MEN'S CLASSIC FIT SHIRT**

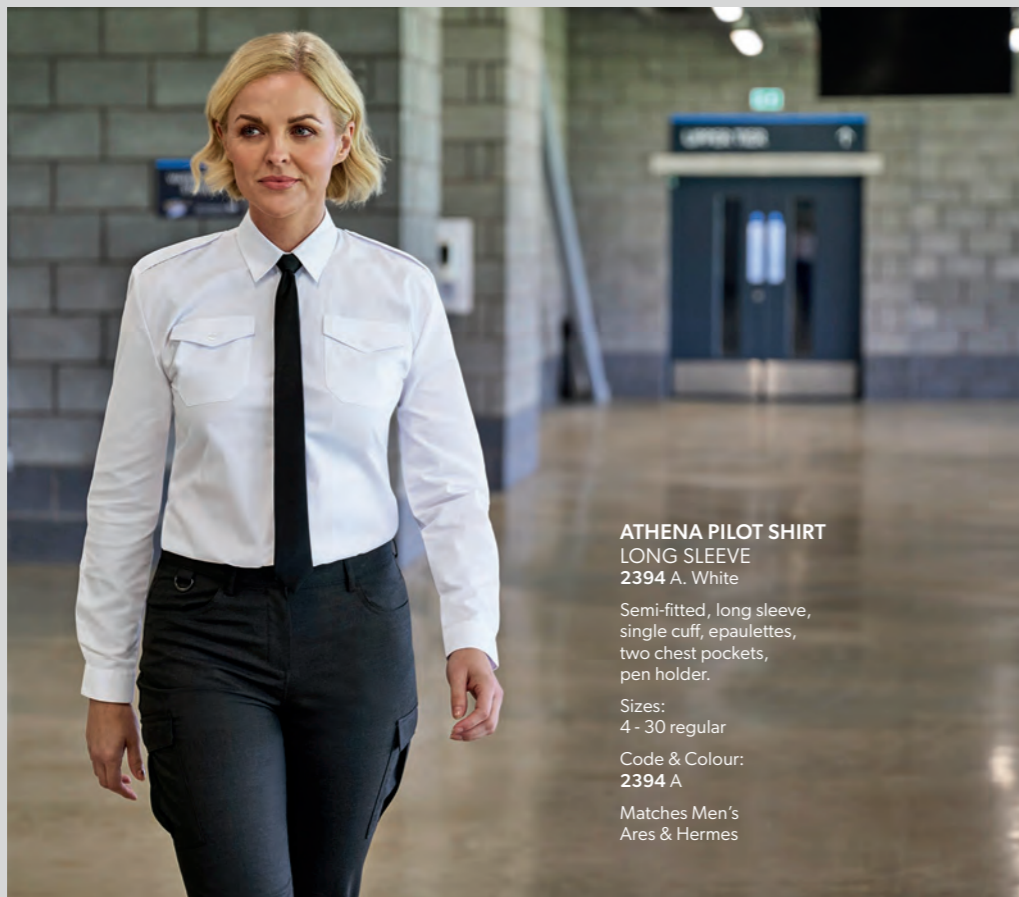
**IN STOCK NOW**

SHE WEARS  
ATHENA PILOT SHIRT  
2394 A. White



# BROOK TAVERNER

SINCE 1912



**ATHENA PILOT SHIRT**  
LONG SLEEVE  
2394 A. White

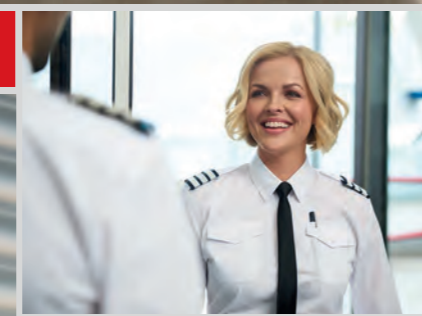
Semi-fitted, long sleeve,  
single cuff, epaulettes,  
two chest pockets,  
pen holder.

Sizes:  
4 - 30 regular

Code & Colour:  
2394 A

Matches Men's  
Ares & Hermes

IN STOCK NOW



**HESTIA PILOT SHIRT SHORT SLEEVE**  
A. White

Semi-fitted, short sleeve, epaulettes,  
two chest pockets, pen holder.

Sizes:  
4 - 30 regular

Code & Colour:  
2395 A

Matches Men's  
Orion & Olympus

## WOMEN'S PILOT SHIRTS



**ATHENA PILOT SHIRT**  
SEMI-FITTED, LONG SLEEVE  
2394 A. White



**HESTIA PILOT SHIRT**  
SEMI-FITTED, SHORT SLEEVE  
2395 A. White

## THINK BEYOND AVIATION

A testament to both style and functionality. Ideal for Facilities Management, Security, Warehouse teams and other active roles, these garments are crafted to withstand the challenges of dynamic work environments.



Contains  
65% recycled  
material

**BROOK  
TAVERNER**

SINCE 1912

## MEN'S CLASSIC FIT SHIRT

You asked, we listened. Following customer feedback on our best-selling Juno shirt, we have developed Titan. This shirt still boasts all the same qualities that wearers have come to love about Juno, just without the chest pocket.



**TITAN SHIRT**  
CLASSIC FIT, LONG SLEEVE  
A. White  
Classic fit, long sleeve, single cuff.  
Sizes:  
14.5" - 22"  
Code & Colour:  
4565 A



**IN STOCK NOW**



**NO POCKET FOR  
A CLEAN LOOK**



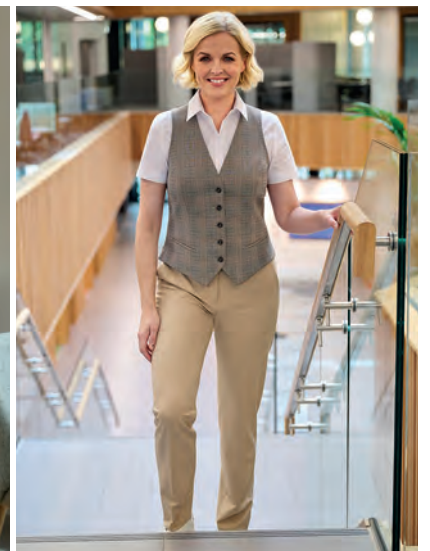
Contains  
65% recycled  
material

**TITAN SHIRT**  
CLASSIC FIT (no chest pocket)  
4565 A. White



# BROOK TAVERNER

SINCE 1912



[www.brooktaverner.com](http://www.brooktaverner.com)

All information is correct at the time of print (September 2024). Every effort has been made to ensure that all colour reproduction is as accurate as possible. All OEKO-TEX® certificates are available upon request.