



TAILORED  
IMAGE

...More than a Uniform



BROOK TAVERNER  
PLATINUM  
PARTNER 2024

# HOTELS & HOSPITALITY



THE PERFECT UNIFORM FOR EVERY BUSINESS, EVERY ROLE, EVERY TIME.



# THE ROLE OF CORPORATEWEAR IN THE HOTEL & HOSPITALITY SECTORS

In the hotel & hospitality industries, uniforms play a vital role in projecting professionalism and consistency, creating a sense of reliability for guests and staff alike. This visual unity among team members isn't just about aesthetics, it's practical, too. Guests can swiftly identify who to approach for assistance, facilitating smoother interactions and enhancing their experience.

Each staff member becomes a representative of the establishment's values, ethics, and brand, whether they are customer-facing or working behind the scenes. Encouraging a sense of hard work and teamwork, uniforms place focus on service quality rather than personal style.

Thoughtfully chosen uniform design and materials further contribute to a professional image, as the right uniform enables individuals to look the part and perform their duties with ease, confidence, dignity, and pride. Brands that prioritise this aspect of their presentation are more likely to foster a loyal, satisfied customer base, and a dedicated, motivated team.

At Brook Taverner, we understand the critical role uniform plays in shaping identity. With vast experience supplying a diverse range of teams in the hotel and hospitality sectors worldwide, we provide a stock-supported selection of styles, fabrics, and colours. Working together with our distributors, we are confident we will deliver the perfect uniform for every business, every role, every time.



FRONT OF HOUSE	4, 5
MANAGEMENT	6, 7
SERVICE / FORMAL	8, 9
SERVICE / CASUAL	10, 11
HOUSEKEEPING	12, 13
SPA & WELLNESS	14, 15
MAINTENANCE & FM	16, 17
OUTDOOR	18, 19







1

2



3



4



5



6



7



8



9

“When a man or woman puts on a uniform, they become part of something larger than themselves.”  
– Queen Elizabeth II

# FRONT OF HOUSE

First impressions are crucial, and the right uniform for the Front of House team can set the tone from the moment guests arrive. Opt for tailored, high-quality pieces that communicate a welcoming approachability and professionalism, allowing staff to look fresh throughout long shifts in highly-visible roles.

1. **RAPPORT COLLECTION** Jacket & Trouser / **CASUALS & SEPARATES** Premium Knitwear Rollneck
2. **CASUALS & SEPARATES** Performance Knitwear Turtleneck
3. **SHIRT & BLOUSE COLLECTION** Premium Cotton Shirt
4. **SOPHISTICATED COLLECTION** Suit / **CASUALS & SEPARATES** Check Designs Waistcoat
5. **ECLIPSE COLLECTION** Jacket / **SHIRT & BLOUSE COLLECTION** Crepe De Chine Blouse
6. **ECLIPSE COLLECTION** Jackets / **SHIRT & BLOUSE COLLECTION** Satin Blouse & Premium Cotton Shirt
7. **PERFORMANCE COLLECTION** Jacket & Trouser / **SHIRT & BLOUSE COLLECTION** Stretch Oxford Shirt
8. **SHIRT & BLOUSE COLLECTION** Crepe De Chine Blouse / **PERFORMANCE COLLECTION** Skirt
9. **RAPPORT COLLECTION** Jackets, Trouser & Skirt / **SHIRT & BLOUSE COLLECTION** Stretch Cotton Blend Shirts





# MANAGEMENT

The management team's uniform doesn't just signal leadership; it fosters unity and shared responsibility among all employees. By setting a high standard in appearance, management embodies the professionalism expected at every level of the establishment and reinforces an inclusive, hands-on approach to leadership.

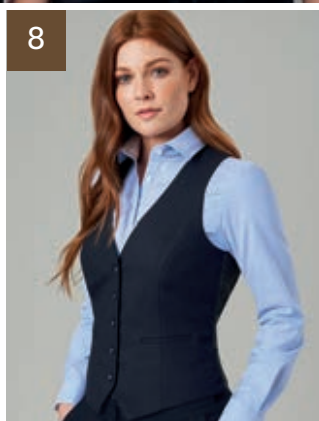
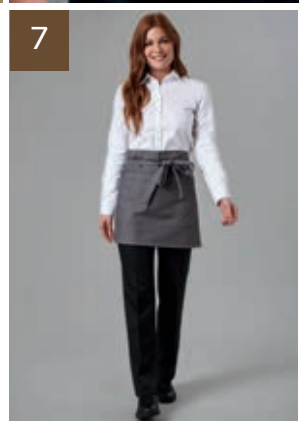


1. **CASUALS & SEPARATES** Premium Knitwear Rollnecks
2. **JERSEY STRETCH COLLECTION** Dress
3. **SOPHISTICATED COLLECTION** Jackets / **SHIRT & BLOUSE COLLECTION** Premium Cotton Shirt & Pussy Bow Blouse
4. **SIGNATURE COLLECTION** Suit, Jacket & Skirt / **SHIRT & BLOUSE COLLECTION** Premium Cotton Shirts
5. **SHIRT & BLOUSE COLLECTION** Premium Cotton Non-Iron Shirts
6. **ECLIPSE COLLECTION** Jacket / **SHIRT & BLOUSE COLLECTION** Royal Oxford Shirt
7. **CASUALS & SEPARATES** Tweed Jacket / **SHIRT & BLOUSE COLLECTION** Cotton Rich Shirt
8. **JERSEY STRETCH COLLECTION** Jackets & Trousers / **CASUALS & SEPARATES** Premium Cotton Polos
9. **RAPPORT COLLECTION** Jackets & Trousers / **CASUALS & SEPARATES** Premium Knitwear Rollnecks



# SERVICE / FORMAL

Whether in a high-end restaurant or transitioning to an evening uniform, formal service staff attire typically embraces tradition with timeless style. Classic colour combinations, complemented by waistcoats and ties, create the impression of refined service to enhance the overall dining experience.



“It has been, and continues to be, our responsibility to fill the earth with the light and warmth of hospitality.”  
– Conrad Hilton

1. ECLIPSE COLLECTION Jacket & Trouser / SHIRT & BLOUSE COLLECTION Premium Cotton Shirt
2. PERFORMANCE COLLECTION Waistcoat / SHIRT & BLOUSE COLLECTION Stretch Cotton Blend Shirt
3. SHIRT & BLOUSE COLLECTION Crepe De Chine blouse
4. ONE COLLECTION Waistcoats, Trouser & Skirt / SHIRT & BLOUSE COLLECTION Stretch Cotton Blend Shirts
5. SHIRT & BLOUSE COLLECTION Stretch Cotton Blend Shirts
6. SHIRT & BLOUSE COLLECTION Business Essential Shirts
7. ONE COLLECTION Trouser / SHIRT & BLOUSE COLLECTION Classic Oxford Shirt
8. TODAY COLLECTION Waistcoat / SHIRT & BLOUSE COLLECTION Stretch Oxford Shirt
9. SHIRT & BLOUSE COLLECTION Business Essential Shirt / ONE COLLECTION Trouser

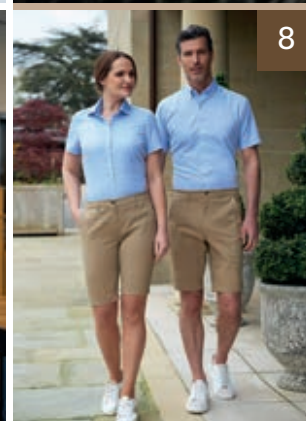
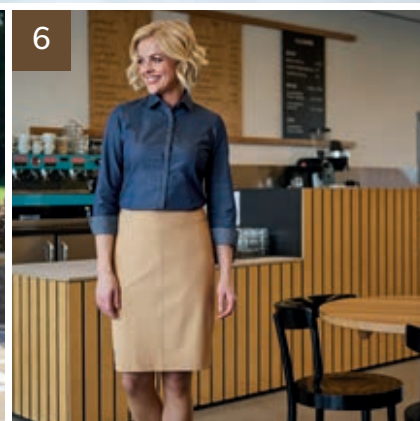
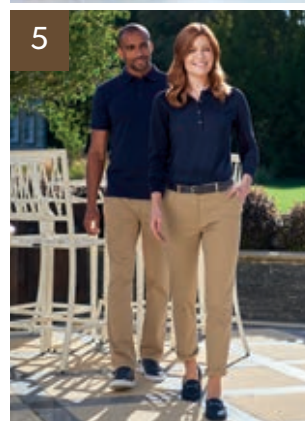


# SERVICE / CASUAL

As a highly customer-facing role, service staff play a fundamental part in creating the right impression. Brands can incorporate softer tones and informal, yet coordinated, styles in their uniform to place an emphasis on approachability. A well-chosen, high-quality uniform keeps staff comfortable and smart throughout the working week.



1. **CASUALS & SEPARATES** Premium Cotton Polo
2. **SHIRT & BLOUSE COLLECTION** Crepe De Chine Blouse / **CASUALS & SEPARATES** Check Designs Trouser
3. **SHIRT & BLOUSE COLLECTION** Business Casual Shirts
4. **CASUALS & SEPARATES** Check Designs Waistcoats / **SHIRT & BLOUSE COLLECTION** Royal Oxford Shirts
5. **CASUALS & SEPARATES** Premium Cotton Polos & Chinos
6. **RAPPORT COLLECTION** Skirt / **SHIRT & BLOUSE COLLECTION** Business Casual Shirt
7. **CASUALS & SEPARATES** Tweed Waistcoats / **SHIRT & BLOUSE COLLECTION** Royal Oxford Shirts
8. **SHIRT & BLOUSE COLLECTION** Royal Oxford Shirts / **CASUALS & SEPARATES** Chino Shorts
9. **SHIRT & BLOUSE COLLECTION** Business Casual Shirts / **CASUALS & SEPARATES** Check Designs Trousers



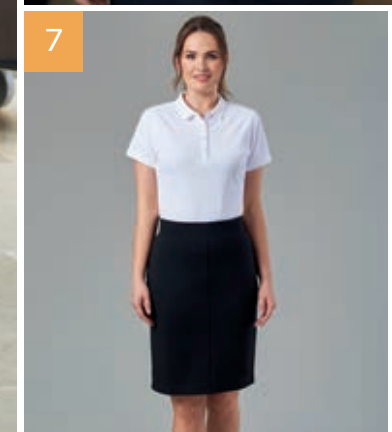
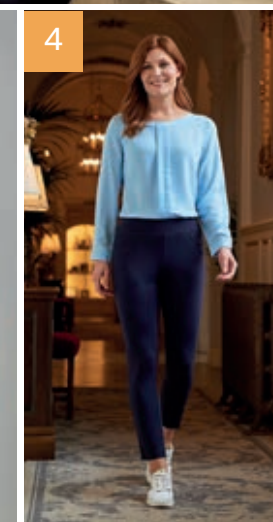
“The key is to set realistic customer expectations and then not to just meet them, but to exceed them - preferably in unexpected and helpful ways.”  
– Sir Richard Branson





# HOUSEKEEPING

We understand the importance of attention to detail when it comes to outfitting housekeeping teams. Practical yet subtle features like convenient key loops and strategically-placed pockets increase efficiency and allow staff to deliver outstanding service.



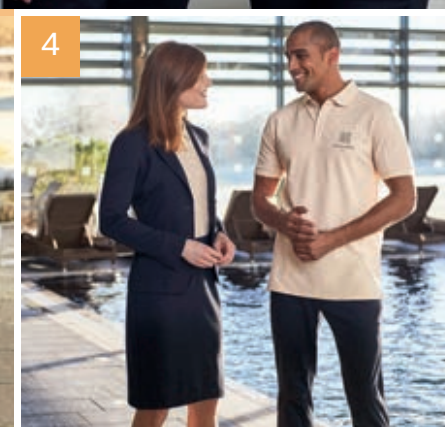
1. CASUALS & SEPARATES Tunic / JERSEY STRETCH COLLECTION Capri Trouser
2. CASUALS & SEPARATES Premium Cotton Polos & Chinos
3. SHIRT & BLOUSE COLLECTION Classic Oxford Shirt
4. JERSEY STRETCH COLLECTION Capri Trouser / SHIRT & BLOUSE COLLECTION Crepe De Chine Blouse
5. TODAY COLLECTION Cargos / CASUALS & SEPARATES Performance Polos
6. SHIRT & BLOUSE COLLECTION Stretch Top
7. CASUALS & SEPARATES Premium Cotton Polo / JERSEY STRETCH COLLECTION Skirt



"When customers feel well  
cared for, they become loyal  
advocates." – Isadore Sharp

# SPA & WELLNESS

Spa & Wellness uniforms must visually support the purpose of each space. Soft fabrics and calming colours reinforce the serene ambiance of the spa, while vibrant shades and flexible materials promote the dynamic energy expected of fitness facilities, whether indoors or out.



1. **CASUALS & SEPARATES** Premium Cotton Polo / **JERSEY STRETCH COLLECTION** Capri Trouser
2. **CASUALS & SEPARATES** Performance Polos
3. **JERSEY STRETCH COLLECTION** Jackets / **SHIRT & BLOUSE COLLECTION** Premium Cotton Non-Iron Shirts / **CASUALS & SEPARATES** Jeans
4. **JERSEY STRETCH COLLECTION** Jacket & Skirt / **CASUALS & SEPARATES** Premium Cotton Polos & Chino
5. **CASUALS & SEPARATES** Performance Polo & Chino
6. **CASUALS & SEPARATES** Tunic



# MAINTENANCE & FM

When functionality and durability are paramount, uniforms must endure the physical demands of daily tasks. Outfitting active employees in practical, well-designed clothing not only boosts their performance but also ensures the smooth, efficient operation of facilities, supporting both guest and employee satisfaction.



1



5



6



2



3



4

- 1. **TODAY COLLECTION** Cargos / **CASUALS & SEPARATES** Performance Knitwear V-neck
- 2. **CASUALS & SEPARATES** Quilted Jacket, Gilet & Premium Cotton Polos
- 3. **TODAY COLLECTION** Cargo / **SHIRT & BLOUSE COLLECTION** Business Essential Shirt
- 4. **CASUALS & SEPARATES** Fleece Gilet & Jacket / **TODAY COLLECTION** Cargos
- 5. **CASUALS & SEPARATES** Premium Cotton Polo / **TODAY COLLECTION** Cargos
- 6. **CONCEPT COLLECTION** Jackets & Trousers
- 7. **SHIRT & BLOUSE COLLECTION** Business Essential Shirt
- 8. **CASUALS & SEPARATES** Quilted Gilet & Performance Knitwear 1/4 Zip
- 9. **CONCEPT COLLECTION** Trousers / **SHIRT & BLOUSE COLLECTION** Classic Oxford Shirt
- 10. **CASUALS & SEPARATES** Fleece Gilet & Performance Knitwear Polo



7



8



9



10



# OUTDOOR

BROOK  
TAVERNER

SINCE 1912

Work-ready, whatever the weather. Providing staff with appropriate outerwear is essential for roles that involve time outdoors as it helps them stay warm and dry while preserving the professional look of the uniform beneath. This way, staff can stay focused on their duties without being hindered by uncomfortable weather conditions.

1. OUTERWEAR COLLECTION Overcoats
2. OUTERWEAR COLLECTION Raincoats
3. OUTERWEAR COLLECTION Raincoat Hood
4. CASUALS & SEPARATES Fleece Jacket & Quilted Jacket
5. CASUALS & SEPARATES Quilted Jacket
6. CASUALS & SEPARATES Fleece Gilet & Jacket



There's no bad weather,  
only unsuitable clothing."  
– Alfred Wainwright





TAILORED  
IMAGE

...More than a Uniform



BROOK TAVERNER  
**PLATINUM**  
PARTNER 2024

# HOTELS & HOSPITALITY

CORPORATEWEAR / FORMAL - CASUAL - INDIVIDUAL

